

# MIMIG

@MMediaGroup

## PEDICABS Artwork Specification





# ARTWORK & DELIVERY SPECIFICATION

Ensure that all artwork is provided in CMYK, in a high resolution 300dpi PDF with no bleed required. All submitted artwork must be under a 2 GB file limit.

For maximum legibility, please avoid small text sizes and thin font styles. For increased impact, consider using QR codes and AR functionality.

Production assistance services are available upon request through your sales contact.

Please deliver artwork to [artwork@mmediagroup.co.uk](mailto:artwork@mmediagroup.co.uk) at least 7 working days before your campaign start date. Being unsuccessful in delivering correct artwork by this date may result in a delayed or cancelled campaign.



# ARTWORK & DELIVERY SPECIFICATION

## A & B - 2 x Side Panels

744 mm x 1382 mm

## C - Footwell Under Seat

770 mm x 165 mm

## D - Roof Inside Cab

1150 mm x 760 mm

## E – 2 x Front panel behind bike

290 mm x 500 mm portrait

## F - 6 Sheet Poster for the Back Panel

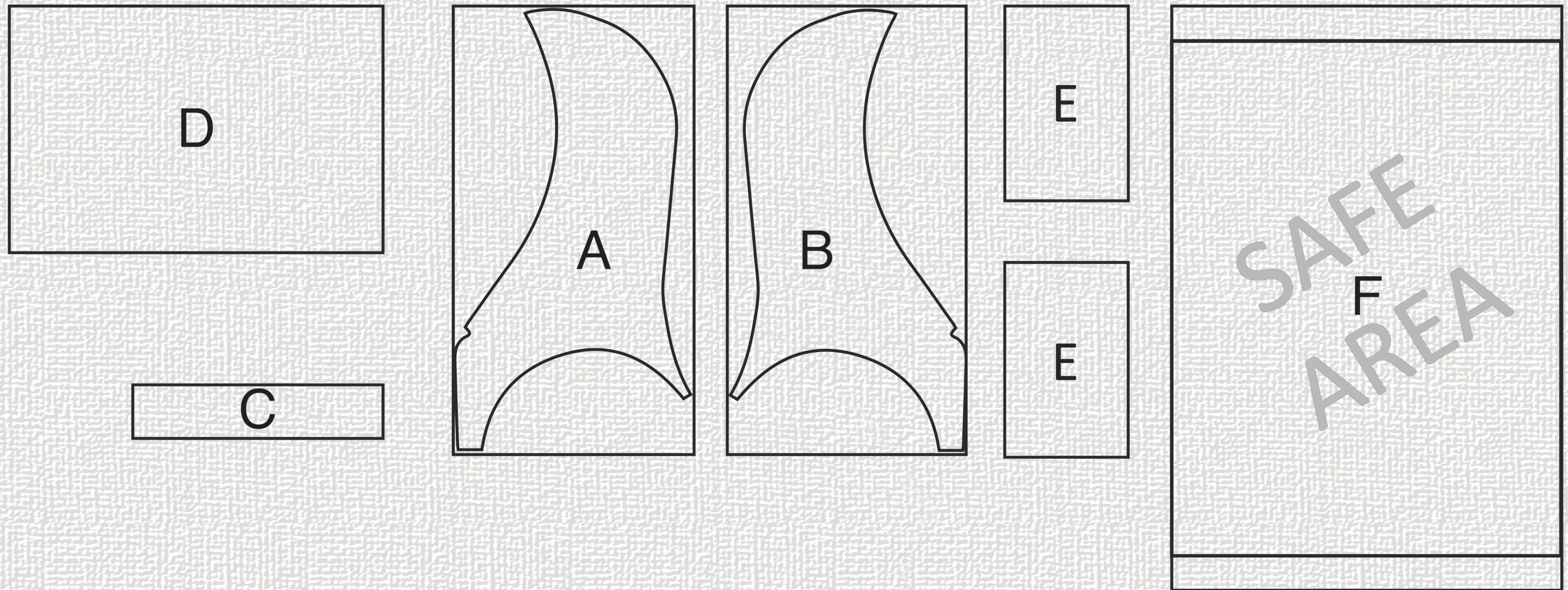
1200 mm x 1800 mm portrait, **Safe Area** 3-inches from the top and bottom

Please note, we do not require bleeds on artwork.





# ARTWORK SPECIFICATION







# MIMIG

Thank You

08450 752 752 | [www.mmediagroup.co.uk](http://www.mmediagroup.co.uk)